

ANNUAL REPORT

2024-2025



Table of Contents



3	Acknowledgement of Country
4	Strategic direction
5	Our goals
6	Reasons for seeking assistance, Statistics and Highlights
9	Lillian's outings
10	President's report
11	CEO's report
12	Fundraising report & Our supporters
14	Resident's experiences
16	Lillian's girls' achievements
17	Lillian's staff
18	Lillian's pets
19	Treasurer's report
19	Lillian's funding
21	Committee's report
22	Statement by members of the committee
23	Statement of financial position
25	Income and expenditure statement
27	Lillian's income and expenditure
28	Independent auditor's report

Acknowledgement of Country



Lillian's would like to pay respect to the Gadigal and Wangal people of the Eora Nation of where Lillian's is based. We pay our respect to their Elders past, present and emerging, and extend that respect to all Aboriginal and Torres Strait Islander peoples today.

Lillian's acknowledge the hardships that Aboriginal and Torres Strait Islander people have endured and are still facing as a result of colonisation.

We all have a responsibility to advocate for First Nations' equality and equity.
We acknowledge that this work is ongoing and must continuously evolve.

Always was, always will be, Aboriginal land.



Strategic Direction 2025-2027

Our Strategic Plan outlines the organisation's priorities for 2025 to 2027, as we strive to promote better opportunities for girls and young women who are at risk of homelessness and disconnection from their communities.



Our Strategic Goals

#1

Our vision is for all girls and young women to experience a safe and empowering environment that enables them to flourish and thrive.

#2

Our purpose is to accommodate girls and young women in safe, secure and relationally enriched environments which respect individual cultural needs and desires.

#3

Our goal is to assist girls and young women to become autonomous, self determining and capable of independent living.

Our Strategic Focuses

Client Impact

- Provide comprehensive, high-quality care and experiences that empower young women to build the skills they need for independent life
- Strengthen measurement of the outcomes and impacts of Lilian's services
- Broaden Lilian's reach and impact through the development of new programs and care models to support a wider range of vulnerable young women

Organisational Impact

- Develop a comprehensive plan to secure Lilian's long-term viability, adaptability, and continued impact in supporting vulnerable young women
- Develop and implement an employee value proposition that attracts, engages and retains high quality staff
- Reduce environmental impact and promote practices that support sustainability

Sector Impact

- Position Lilian's as a strong influencer, innovator, and collaborator in the homelessness sector, contributing to system improvements and raising awareness of best practices in medium to long-term care for vulnerable teenage girls

OUR GOALS

1 Housing and physical safety

To accommodate young women who are experiencing homelessness in a safe, secure and supportive environment which respects individual cultural needs and desires, and empowers residents to become autonomous, self directed and capable of independent living.

2 Attachment and connection

To provide young women with therapeutic case management services, connecting them with community, culture and positive relationships.

3 Exemplary service provision

To manage and operate the service in a professional manner, with practices informed by current research, that focus on facilitating independence and the achievement of personal goals for each of the residents.

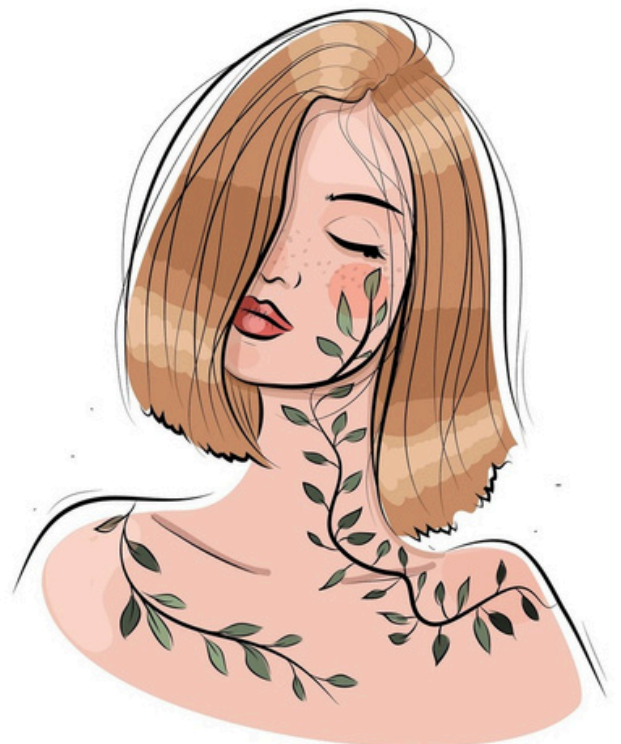
Maintain ASES Certificate Accreditation and obtain Award level Accreditation.

4 Advocacy

To work towards raising community awareness of the issues relating to the homelessness of young women (including sexual assault, family violence and addiction) and to foster the development of related support services and projects aimed at prevention.

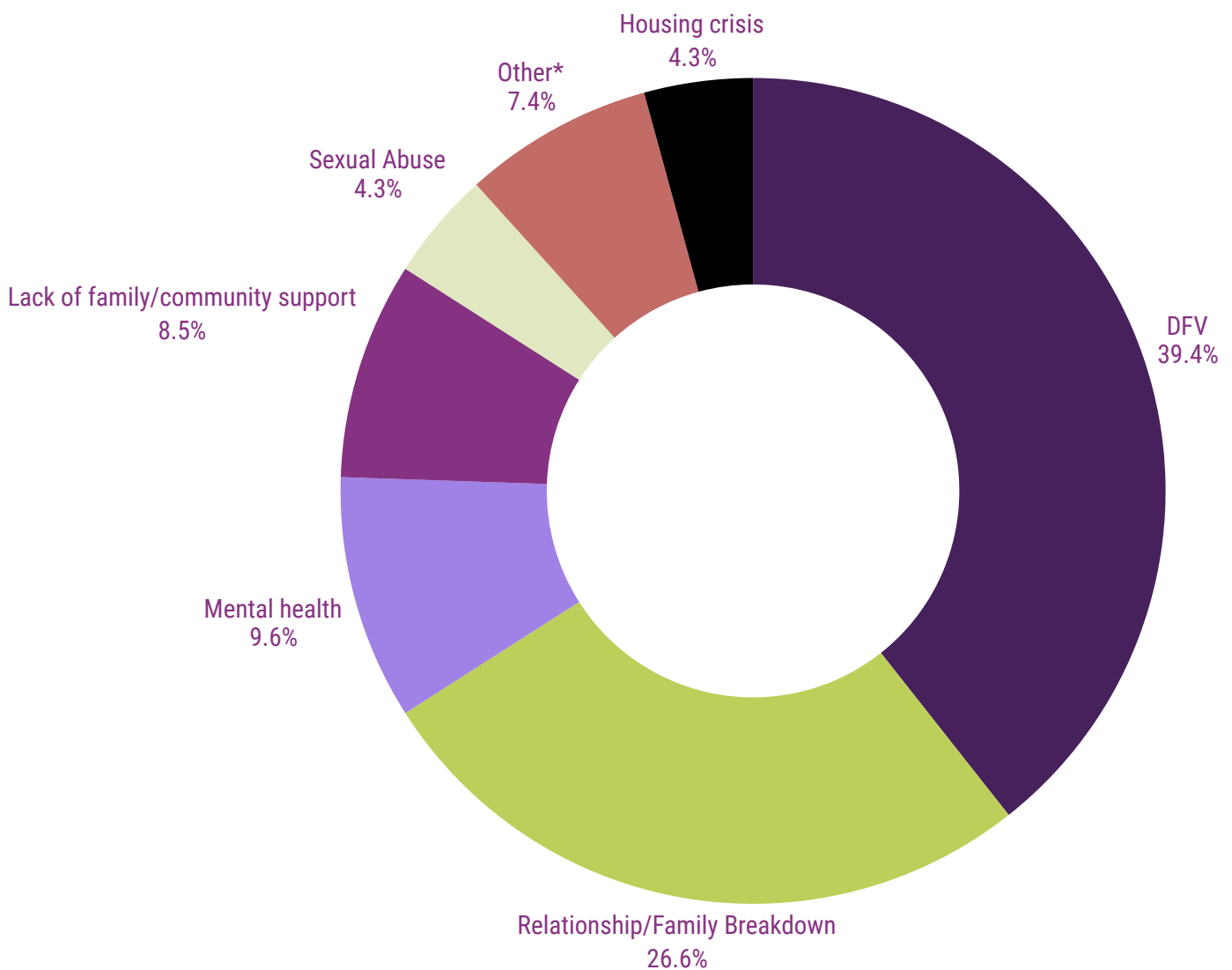
It's not blood that
makes you family.
It's love.

PictureQuotes.com



Reasons for Seeking assistance

Below are the primary reasons that residents are referred:



*Other reasons include

Inappropriate dwelling conditions (2.1%) housing affordability stress (2.1%), AOD use (1.1%) transition from custodial arrangements (1.1%), home environmental reasons (1.1%)

Lillian's Highlights

88

CLIENTS
SUPPORTED

17

ACCOMMODATION
SUPPORTS

71

OUTREACH CASE
MANAGEMENT SUPPORTS



The Statistics



3583
SAFE SLEEPS

86.3%
16 YEARS AND UNDER

15.9%
ABORIGINAL

41.5%
MENTAL ILL HEALTH

3.20%
NDIS SUPPORT RECEIVED

Lillian's Outings and Workshops

Workshops and house outings are specially designed for our girls; they offer a valuable opportunity for the girls to establish connections and form strong bonds with each other by participating in shared experiences. These experiences play a vital role in nurturing the emotional well-being of each resident

- 3 day Yoga Retreat at Yanada in partnership with the Yoga Foundation.
- House outings involved movie nights, Opera House
- Group indoor activities such as movies, dinner, and games nights, bonfires and camping in the backyard.
- Completed 2 swimming programs at Ashfield Swimming Pool for 6 weeks each term.
- Completed workshop with New Reflections
- 3 day holiday to Archie's Burrill Lake – swimming, surfing lessons
- Luna Park
- Jamberoo
- Taronga Zoo
- Sea Life Aquarium
- Art Gallery NSW
- Bowling
- Jet Boating
- Archie Bros Fun House
- Kayaking on Sydney Harbour
- Easter Sunday – High Tea
- Christmas Day Breakfast and Lunch at Lillian's
- Theatre – Circus
- Movies and dinner in Newtown



President's Report



Thank you for allowing me to represent Lillian's in this capacity. It is an honour.

Lillian's is the gold standard of long-term care for young women and is the only refuge of its kind in NSW. It is recognised that there should be more versions of Lillian's across the state to support children who have suffered abuse and would benefit from long-term care.

2025 has been a momentous year for the staff and residents of Lillian's. While the focus has always been on the care and support for vulnerable young women between the ages of 13 and 17, the staff at Lillian's have understood that for children who have suffered abuse and instability at a young age, the care needs to extend past this age.

This year the full-time, part-time, volunteers and student staff have worked tirelessly to sustain a sense of calm, support and continuity for the residents. A special mention to the CEO Vivian Stavis who has kept it all moving forward, every step of the way. Vivian has been pivotal this year in paving the way to establish Lillian's 2.0, which is a long-held dream of hers to support the young women after they leave Lillian's.

During this year, Lillian's has had the good fortune of being supported by a few key businesses. Urbis conducted a study on the economic and socio-economic impact of the intervention of Lillian's in a young person's life. It demonstrated the impact of assisting a child to complete school and gain a career pathway. The report also showed that Lillian's delivers over 2.5 times the value to clients and the NSW community than comparable out of home care services....yet funding still remains our greatest concern.

Sydney Design School has been an ongoing support to Lillian's and kicked off the first Scholarship to be offered to a resident of Lillian's. It is my wish that this list of scholarships in varied fields to grow over the coming years, to allow young women to thrive past their schooling years. It is a wonderful adjunct to the Helen Campbell Scholarship Fund which was established last year by our former President Helen Campbell.

I'd like to thank the Management Committee who pool their knowledge every month to make sure Lillian's continues to thrive. Your combined knowledge and support makes a big impact and it ripples through the staff and residents more than you may realise.

Nicole Graham

CEO's Report



I'm so proud of all that the girls and the team have accomplished in the past year at Lillian's. The incredible girls and young women who access our services are the heart of everything we do, and your strength and courage inspire us every day. You have faced challenges no young person should have to endure, and it is a privilege to witness your transformation as you find safety, stability, and a sense of belonging at Lillian's. You provide invaluable peer support and kindness to each other and new residents entering the program and for that I am grateful.

During my time at Lillian's, I've witnessed extraordinary outcomes achieved by the girls. Through brokerage funds, we've been able to support their transition to independent living, furnish their new homes, access essential health services, assist with transport, and ensure they have the technology needed to pursue education and vocational training.

Our partnership with Youth Off the Streets (YOTS), through our Subcontract Agreement, has grown stronger, allowing YOTS to provide crucial support when needed. This collaboration benefits both organisations and, most importantly, the girls and young women at Lillian's. Similarly, our partnerships with Metro Housing and Good Shepherd have continued to thrive, reinforcing our deep commitment to those we support.

To my dedicated and exceptional staff, volunteers and students, thank you, the care you provide each day is nothing short of extraordinary. Working in the homelessness sector is always demanding, and operating in a 24/7 environment presents even greater challenges. Your commitment, resilience, humour, and solidarity are the crux of this service. As a unified team, we've remained actively engaged through meetings, maintained strong partnerships, and kept up with policy changes to ensure we deliver the highest quality care. We supported six student placements from Social Work, Youth Work, and Community Services programs, providing them with valuable hands-on experience. Sadly, we farewelled Emma and Louella.

I want to express my sincere thanks to our community, the saying "it takes a village" has never been truer and because of our generous donors and dedicated service partners, Lillian's has been able to fulfill its mission. With limited funding, we rely heavily on donor generosity and collaborative efforts with other agencies to care for some of the most vulnerable girls and young women who call Lillian's home.

Finally, I want to acknowledge the tireless work of our Management Committee. Your diversity, generosity, and dedication have been instrumental in driving Lillian's growth and positive impact, helping to create better futures for the courageous young women we support.

Vivian Stavis

Fundraising Report



I loved the event we pulled together to relaunch our fundraising on the 7th November 2024 at White Bay Power Station. However, even though we had the most beautiful photos of the night - this was my only one after everyone had left, before I left the venue xx No make up and exhausted but filled with a great feeling of joy and connection that resonated through everyone that evening.

In my role as **Chief Goodwill Architect**, my focus is simple but deeply meaningful: to raise additional funds and build awareness, community, and long-term support for the girls and young women at Lillian's so they can forge secure, hopeful and empowered futures.

This past year has been one of reconnection, momentum, and laying foundations for Lillian's next chapter

After a 3 year pause, we proudly brought back our signature fundraising dinner in November 2024. Hosted at the iconic White Bay Power Station, our Gatsby & Gangster evening brought together passionate supporters, partners and community advocates. The night helped re-ignite awareness for Lillians and help raise funds to enhance the care and opportunities available to girls living there. In May 2025, we re-introduced our — **Laugh Out Loud for Lillian's**, a community comedy evening held at Balmain Town Hall. This more intimate and grassroots approach allowed us to connect with new supporters, celebrate the resilience and spirit of our girls, and demonstrate that small, local initiatives can have meaningful impact. Both events not only raised funds but also widened our circle of supporters, fostered partnerships, and amplified our message:

A safe home changes lives. Hope changes futures.

Central to my role is cultivating long-term relationships with donors, businesses, philanthropists, and community partners. Much of this work happens quietly — through conversations, introductions, storytelling, and ensuring supporters feel connected to the heart of Lillian's. Looking ahead, I am looking forward to focusing on: Deepening corporate and philanthropic partnerships, Expanding our supporter base through connection-driven engagement, Formalising an annual events and donor nurturing program, Exploring new funding models to support long-term growth, including potential future accommodation initiatives.

The goal remains clear: **To ensure Lillian's continues to be a safe haven and home for more girls and young women — not just today, but for decades to come.** Gratitude to everyone who has stood beside us this year — sponsors, volunteers, guests, partners and community members — thank you. Your belief in our mission is turning hope into tangible futures for young women who deserve every chance to thrive.

I am honoured to serve Lillian's and look forward to growing our village of supporters in the years ahead.

**Together, we can continue building something truly meaningful
More homes. More hope. More futures rewritten.**

Natalie Britton

Fundraising Highlights



Our Supporters

Lillian's would like to acknowledge and send our heartfelt thanks to:

Aesop
Annie Williams
Amanda Grace
ASU (Australian Services Union)
Banana Bread Project
Births Deaths and Marriages NSW
Bertoni
CAOS (Child and Adolescent Outreach Service)
Cape Byron Platters
Caretakers Cottage
Chris Kenworthy
City of Sydney Council
Commonwealth Bank
COOK4GOOD
Crunch Fitness
Department of Communities and Justice
Dureflex Group Australia
Elemental Chiropractic
Erskineville Dental
Erskineville Family Medical Practice
Flick
Fussell Foundation
Gift of Bread
Good 360
Good Shepherd
Harper Bernays Charitable Trust
Homelessness NSW
Homes NSW
Inner west Council
Inner West Mums
Jenny Leong MP
Koby Shetty MP
Kelbys coffee shop
Launchpad
Legal Aid
Lindt Chocolates
McGrath
Mango Credit
Metro community Housing
Messina
Modibody
Oz Harvest
Options Youth Housing
Prestige Auto Traders
ReLove
Renovating for Profit
Red Mill Rum
Sector Development
Secure Base Solutions
Share the Dignity
St Elessa Food Initiative
StreetSmart Australia
Store Pro
Sydney Design School
Swarovski
The Well Store
The Girls Refuge
Thompson Jenkins Endowment
The Lonergan Foundation
Thread Together
Total Construction
Twin Pines
Two Good Co.
Ultimo TAFE
Vulcan Steel
Verve Portraits
Western Sydney University
Willoughby Theatre Company
Yfoundations
Yoga Foundation
Youth Block
Youth off the Streets (YOTS)
OzDesign Furniture
Otter Craft Distiller
Oroton
X-Commercial

Ellie's Letter

Looking back at my time at Lillians, I realise that my journey has been one of growth, exploration and gratitude. I realise that I haven't found a house, I have found a home.

My name is Ellie, I'm 17 years old.

I was born and raised in the Blue Mountains. I had a very difficult start to my life. To explain it shortly, my family was extremely dysfunctional. My mother had extreme mental health issues and couldn't take care of herself, often leaving me to take care of her. I suffered emotional, physical abuse and neglect, and it also impacted my father drastically to where I yet again had to step up and be the carer, and I ended up suffering through another cycle of neglect.

I left the family home at 15 years old, and ended up in a few crisis refuges around western Sydney. I didn't have a good experience at all living in them, and they added fuel to the already raging fire of everything that I had been dealing with back home. At the end of it, I associated refuge's with young people who are violent, involved in crime and are unsafe. I did not want to go back to a refuge.

I was living at another crisis refuge as it was either that or the streets when I got referred to Lillian's. At first, I was unsure. But upon reading the website, watching the videos of past residents' experiences and reading the letter they have written, I noticed that Lillian's was different. A safe haven for women, a place of growth, a place of understanding. A home.

I moved in January 2024 and the staff at Lillian's immediately made me feel safe, welcome and appreciated. They were understanding, willing to listen and support and I was paired up with the best case manager in the world, Ruby. Me and Ruby have worked through so many obstacles together and she has fought for me like no one has ever before. She has helped me grow into the person I am today, and I cannot express how grateful I am for having her, and all of the staff.

Through my Lillian's journey, I engaged back into education with a goal of becoming a psychologist or caseworker, got my diagnosis for ASD, developed stable relationships, unlearned bad habits, learned to trust again, learned independence and how a normal household should behave. I am now confident in myself as I step into adulthood, transitioning into the semi-independent house in January and embracing my future with open arms.

I am no longer the girl who says yes to everybody but herself. I have boundaries now. And I now wake up each day looking forward to the future. I am in TAFE studying community services with the goal of either becoming a caseworker or a psychologist. I want to help people like Lillian's have helped me.

I couldn't have done this without Lillian's, the amazing staff, the residents who I've seen grow, the tears, the laughter, the screeching along to music when we go on car trips, the dinner conversations, the walks at nighttime, the movie nights, the outings, the shared joy at Christmas time, the hugs, I'll never forget any of it. Thank you Lillian's for making me feel like I belong somewhere. Like I am valued. Thank you for showing me I am deserving of a home and of people who love me.

Ellie ❤️

Serenity's Letter

Hi my name is Serenity, I'm 16 years old,

My early childhood was different from other kids. Living with my mum I was neglected and sometimes forgotten about because she had weird people over 24/7. . After living with my mum for 5 years, my brother ended up taking me because he didn't like how I was living at my mums and I stayed there till I was 12. Living with my brother yes I learnt life skills really early but I'm grateful my brother had taught me what I needed to know. At the age of 12 I got really rebellious so my brother took me back to my mums because he didn't know how to handle a crazy, disrespectful teenager at that time. Living with my mum has never been easy so a week after my brother took me back to my mums I ran away and I didn't stop running for nearly 3 years. I lived in abandoned houses, Parramatta abandoned prison, I've stayed rough many different times.

In August 2024 I moved into my first crisis refuge, I thought it would have been bad but it was the opposite the staff were lovely and trying to help me as much as they could. I was only meant to stay there for 3 months but ended up staying for 8. My favourite Pennys worker, Stella sent a referral for the Lillian Howell refuge, I didn't wanna move because I had finally found stability after not having it for 3 years but during my interview deep down I knew it would be an amazing choice. Yes at first it was hard to find my spot at Lillian's but so much good has come out of Lillian's.

My caseworker Ruby fought alongside me while I pushed myself outside of my comfort zone. I've been the one to not talk to anyone about my feelings and I'm still learning how to do it but meeting Ruby and all the Lillian's staff, seeing how loving and supportive they were I knew I could trust them and open up a little bit.

After 6 months of falling, getting back up and pushing myself to keep going I'm at a point in my life where I'm so grateful to have everything I have right now, I'm about to achieve my goal of finishing year 10, when I got to Lillian's I just thought I'd fail, I am learning I am brave and can talk about my feelings and even try counselling, something I fucking hated and avoided but am willing to try now. I've moved into the semi independent refuge which has been amazing so far, I got my learners, and I'm currently on my Duke of Edinburgh Bronze camp in Queensland, so sorry to be enjoying the Great Barrier Reef and snorkelling, yes that's sarcasm. I'm daring to dream about a job in beauty and want to go to TAFE next year. I want to make new friends that I can have good relationships with and I want to grow into a strong independent woman.

I know Lillian's can point me in the right direction while I learn how to love and grow into the most amazing me!

I have no words to explain how grateful I am, the Lillian's staff have changed my life.

But the biggest thanks I can give is to Ruby and Tania who have seen me at my worst as well as my best and accept all parts of me, just as I am!



The Girls' Achievements

To our incredible young women, you are facing challenges that no one your age should ever have to endure, yet your courage shines through every day. Watching your transformation as you find peace, safety, and belonging within Lillian's refuge is nothing short of extraordinary. Your resilience, your hope, and your strength inspire us beyond words.

You remind us why we do this work, why compassion, care, and belief in one another matter so deeply. Every milestone you achieve, every moment you rise again, is a powerful testament to your limitless potential. You are the heart of our mission, and your journeys continue to move and motivate us every single day.

10 girls moved out of Lillian's this year, they either moved into independent living/transitional housing, the private rental market or to other refuges. We had 3 girls transition into Lillian's transitional properties with Metro Housing, 1 moved into private rental, and 5 exited to other refuges.



- Girls attended school/TAFE/College and University
- 2 girls completed their HSC
- Re-engagement to school and maintaining attendance
- 1 girl moved out of Lillian's transitional Properties into Private rental
- 1 girl completed a music program and a Certificate II in Commercial Cookery
- Completed Diploma of Nursing at TAFE
- RSA and RCG Course completion
- 2 girls secured part-time work in Hospitality.
- Secured work at the Easter Show
- 2 girls got their driving license!
- 1 girl completed the Duke of Edinburgh Award
- DCJ scholarship applications were submitted and approved for most residents.
- We celebrated many 15th x2, 16th x3 and 17th x1 birthday's and had celebrations here at Lillian's for them.
- Management of mental health, and personal growth in this area.

Lillian's Dedicated Staff



Vivian



Tania



Taryn



Tegan



Luna and Impy



Ruby

Lou



Ellie



Kusum



Ruby and Sinead

LILLIAN'S FURRY FRIENDS



ROCKET



IMPY



DAWN



NANA



NEO



FREDDIE

We're well aware of the effect pets have boosting mental health and physical wellbeing.

Lillian's staff are privileged to bring their dogs to work, which also brings happiness and companionship for the residents.

This page is dedicated to our furry friends for making a positive impact on the girls' lives!

Treasurer's Report



I am pleased to report that the Lillian Howell Project Inc. maintained a robust financial position throughout the 2025 financial year. This achievement is attributable to the prudent financial management of our dedicated team and the oversight of the Management Committee, who exercised rigorous expense control and strategically utilised the organisation's balance sheet to fund capital improvements that enhanced operational efficiency.

All projects and grants were fully expended, and all legal accruals and entitlements duly recognised, underscoring our continued commitment to transparency and responsible financial stewardship.

During the 2024/2025 financial year, Lillian's received funding of **\$623,282** from the **Department of Communities and Justice (DCJ)** through our subcontract arrangement with **Youth off the Streets**. Regrettably, our financial records indicate an **operating loss of \$254,000** in relation to this funding. This deficit primarily reflects a significant increase in staffing expenses, which totalled **\$794,000**, representing **100% of our total budget**. These expenditures were, however, both necessary and justified to ensure the refuge was staffed in accordance with best practice standards for service provision.

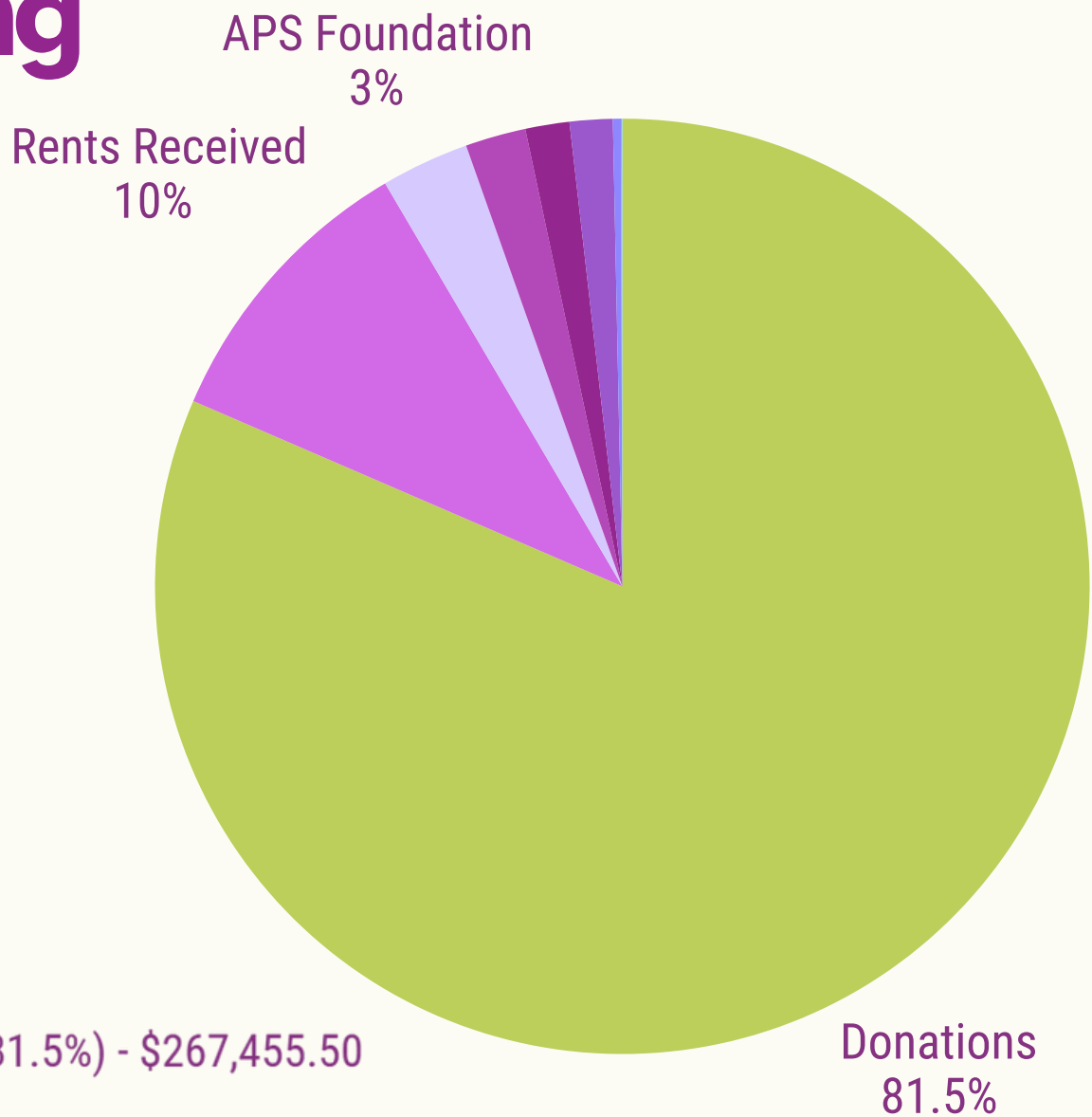
Despite this operational shortfall, Lillian's overall **equity position remains sound**, equating to approximately one year's worth of ordinary service expenditure. We commence the 2025/2026 financial year from a position of strength, with all accruals and provisions appropriately recorded, and a healthy equity balance of **\$611,490**.

Throughout the year, Lillian's continued to prioritise fundraising initiatives, guided by the strategic leadership of **Chief Fundraising Architect, Ms. Natalie Britton**, and supported through our GiveNow donations platform and the generosity of numerous individual benefactors. Owing to these collective efforts, total revenue for the period reached **\$328,000**, of which **\$267,400** was derived from donations; a true testament to the enduring generosity and commitment of our community and supporters.

As I reflect on the past year, I wish to express my profound appreciation for the exemplary governance provided by our experienced and highly capable **Management Committee**. I would also like to extend my sincere gratitude to our exceptional staff team, led with distinction by our **Chief Executive Officer, Ms. Vivian Stavis**. Their expertise, dedication, and unwavering commitment continue to underpin the success and impact of Lillian's work.

Victoria Bell

Funding



- Donations (81.5%) - \$267,455.50
- Rents Received (10%) - \$32,958.82
- APS Foundation (3%) - \$10,000.00
- Interest Received (2.1%) - \$6,878.61
- Inner West Council (1.5%) - \$5,000.00
- Street Smart (1.5%) - \$4,870.00
- Admin Fee Income (0.3%) - \$909.18
- Sundry Income (0.03%) - \$98.41
- Dividends - Franked (0.02%) - \$54.41

Lillian's Own Fund
Total Income - \$328,224.93

Committee's Report

Lillian Howell Project Incorporated
ABN 22 465 606 851
Committee's Report
For the year ended 30 June 2025

Your committee members submit the financial accounts of the Lillian Howell Project Incorporated for the financial year ended 30 June 2025.

Committee Members

The names of committee members at the date of this report are:

Nicole Graham - President
Megan Anderson - Vice President
Victoria Bell - Treasurer
Ann Watchirs - Secretary
Karen Lindley - Member
Lisa Smajlov - Member
Olivia Hall - Member
Danielle Collard - Member

Principal Activities

The principal activities of the association during the financial year were: The provision of a specialist Homelessness service providing medium to long-term 24 hour supported accommodation for young women and girls 13 - 17 years, that is trauma informed, reparative and empowering. As well as providing a safe and secure setting, Lillian's builds the capacity of the girls and young women and supports them in their transition to independent living.

Service approach includes:

- Intervening early to prevent homelessness by promoting awareness of the causes of homelessness and working closely with 'first-to-know' services (e.g., schools, housing providers, correctional facilities, domestic and family violence services, child and family services and other services) to identify people at risk of becoming homeless
- Providing a medium-term response by offering medium-term accommodation with 24/7 support in our refuge and transitional properties including ongoing case management
- Providing intensive responses for clients with complex needs through intensive, multi-disciplinary support to girls and young women at risk of chronic homelessness as well as assertive outreach

Significant Changes

No significant change in the nature of these activities occurred during the year.

Operating Result

The profit from ordinary activities after providing for income tax amounted to \$66,307.22

Signed in accordance with a resolution of the Members of the Committee by:



Nicole Graham - President

Dated: 15th October 2025

Statement by Members of the Committee

Lillian Howell Project Incorporated
ABN 22 465 606 851
Statement by Members of the Committee
For the year ended 30 June 2025

The Committee has determined that the association is not a reporting entity and that this special purpose financial report should be prepared in accordance with the accounting policies outlined in Note 1 to the financial statements.

In the opinion of the Committee the Income and Expenditure Statement, Statement of Financial Position, and Notes to the Financial Statements:

1. Presents fairly the financial position of Lillian Howell Project Incorporated as at 30 June 2025 and its performance for the year ended on that date.
2. At the date of this statement, there are reasonable grounds to believe that the association will be able to pay its debts as and when they fall due.

This statement is made in accordance with a resolution of the Committee and is signed for and on behalf of the Committee by:



Nicole Graham - President

Dated: 15th October 2025

Statement of financial position

Lillian Howell Project Incorporated
ABN 22 465 606 851
Statement of Financial Position as at 30 June 2025

	Note	2025 \$	2024 \$
Assets			
Current Assets			
Cash assets	2	727,135.40	688,841.59
Other assets	3	10,221.27	873.79
Total Current Assets		<u>737,356.67</u>	<u>689,715.38</u>
Total Assets		<u>737,356.67</u>	<u>689,715.38</u>
Liabilities			
Current Liabilities			
Payables	4	34,273.19	25,660.33
Financial liabilities		1,196.37	3,075.46
Current tax liabilities	5	8,484.26	9,799.05
Provisions	6	56,848.52	59,414.06
Total Current Liabilities		<u>100,802.34</u>	<u>97,948.90</u>
Non-Current Liabilities			
Provisions	6	25,063.49	46,582.86
Total Non-Current Liabilities		<u>25,063.49</u>	<u>46,582.86</u>
Total Liabilities		<u>125,865.83</u>	<u>144,531.76</u>
Net Assets		<u>611,490.84</u>	<u>545,183.62</u>
Equity			
Retained profits		611,490.84	545,183.62
Total Members' Funds		<u>611,490.84</u>	<u>545,183.62</u>

Income and Expenditure Statement

Lillian Howell Project Incorporated
 ABN 22 465 606 851
 Income and Expenditure Statement
 For the year ended 30 June 2025

CONSOLIDATED	2025 \$	2024 \$
Income		
Funding from YOTS		
Youth Off The Street	597,115.04	513,528.44
SACS ERO & INDEX	26,167.26	90,536.05
	<u>623,282.30</u>	<u>604,064.49</u>
Donations & Grants	331,966.22	91,227.24
Loneragan Foundation	0.00	50,000.00
APS Foundation	10,000.00	0.00
Street Smart Funding	4,870.00	4,870.00
Scholarship Fund	10,000.00	0.00
MIRVAC Real Estate	0.00	10,000.00
Dividends Received	54.41	31.51
Interest Received	6,878.61	14,885.16
Admin Fee Income	909.18	6,203.55
Sundry Income	98.41	222.88
Rental Income	32,958.82	33,483.69
Total income	<u>1,021,017.95</u>	<u>814,988.52</u>
Expenses		
Staffing expenses		
Wages & Salaries	660,565.78	591,109.74
Superannuation	73,979.11	63,454.86
Workers Compensation	43,406.28	36,015.04
OnCall/First Aid Allowance	11,293.56	11,216.10
Sleepover Allowance	20,153.22	20,636.88
Travel Reimbursement	4,380.90	5,629.80
Training/Conference	4,427.25	2,574.68
Movement in Annual Leave Provision	(2,565.54)	(3,180.80)
Movement in Long Service Leave Provision	(21,519.37)	8,702.38
	<u>794,121.19</u>	<u>736,158.68</u>
Administration expenses		
Accounting	10,157.50	13,685.00
Audit Fees	3,500.00	2,000.00
Administration Expenses	5,147.03	7,173.78
Bank Fees	288.51	222.25
Computer Expenses	2,390.42	1,497.30
Consultant's Fees	3,170.45	3,248.57

Income and Expenditure Statement cont.

Lillian Howell Project Incorporated

ABN 22 465 606 851

Income and Expenditure Statement

For the year ended 30 June 2025

CONSOLIDATED	2025	2024
	\$	\$
Fundraiser 2024/25	27,436.31	0.00
Insurance - Liability	7,405.34	0.00
Petrol / Parking / Toll	196.81	167.14
Office Equipment & Furniture	1,526.84	1,423.63
Postage, Stationery & Printing	3,722.71	3,093.65
Provision for unspent funds	22,934.71	4,870.00
Telephone	2,562.40	1,838.46
Travel costs	327.54	0.00
Staff recruitment	42.89	0.00
Subscriptions	500.83	1,660.44
Supervision	0.00	15,000.00
	<u>91,310.29</u>	<u>55,880.22</u>
Residents Expenses (Project Expenses)		
Education/Resources	0.00	396.41
Activities / Entertainment	5,771.60	5,728.58
Residents / Personal Living Expenses	3,099.30	2,960.18
Food / Housekeeping	22,717.96	32,673.59
Travel	75.54	589.58
Brokerage	29.04	138.33
Household Items	441.62	1,765.41
Other Project Expenses	29,954.69	19,718.37
Program costs	909.18	0.00
	<u>62,998.93</u>	<u>63,970.45</u>
Residents Expenses (Property Expenses)		
Electricity	2,149.15	2,830.17
Repairs / Maintenance	3,931.17	48,144.17
Furniture & Fittings	200.00	0.00
	<u>6,280.32</u>	<u>50,974.34</u>
Total expenses	<u>954,710.73</u>	<u>906,983.69</u>
Profit from ordinary activities before income tax	66,307.22	(91,955.17)
Income tax revenue relating to ordinary activities	0.00	0.00
Net profit attributable to the association	66,307.22	(91,995.17)
Total changes in equity of the association	66,307.22	(91,995.17)

Income and Expenditure Statement cont.

Lillian Howell Project Incorporated
ABN 22 465 606 851
Income and Expenditure Statement
For the year ended 30 June 2025

CONSOLIDATED	2025	2024
	\$	\$
Opening retained profits	545,183.62	637,178.79
Net profit attributable to the association	66,307.22	(91,995.17)
Closing retained profits	611,490.84	545,183.62

Income and Expenditure - Lillian's Own Fund

Lillian Howell Project Incorporated
ABN 22 465 606 851
Income and Expenditure Statement
For the year ended 30 June 2025

Lillian Howell Project Own Fund	2025 \$	2024 \$
Income		
Inner West Council	5,000.00	0.00
APS Foundation	10,000.00	0.00
Street Smart	4,870.00	0.00
Donations	267,455.50	86,970.24
Dividends - Franked	54.41	31.51
Interest received	6,878.61	14,885.16
Admin Fee Income	909.18	6,203.55
Sundry Income	98.41	222.88
Rents received	32,958.82	33,483.69
Total income	328,224.93	141,797.03
Expenses		
Travel Reimbursement	0.00	1,000.00
Bank Fees	288.51	222.25
Postage, Stationery & Printing	90.00	0.00
Activities/Entertainment	51.99	1,800.00
Residents/Personal Living	45.59	1,500.00
Food/Housekeeping	0.00	2,215.42
Other Project Expenses	7,505.32	4,376.80
Total expenses	7,981.41	11,114.47
Profit from ordinary activities before income tax	320,243.52	130,682.56

Independent auditor's report

Oehlers & Company

Chartered Accountant

ABN 23 165 393 137



CHARTERED ACCOUNTANTS
AUSTRALIA - NEW ZEALAND

INDEPENDENT AUDITOR'S REPORT TO THE MEMBERS OF LILLIAN HOWELL PROJECT INCORPORATED ABN 22 465 606 851

Report on the Financial Report

I have audited the accompanying financial report, being a special purpose financial report, of Lillian Howell Project Incorporated (the "Association"), which comprises the Committee's Report, Statement by Members of the Committee, Income and Expenditure Statement, Balance Sheet, notes comprising a summary of significant accounting policies and other explanatory notes for the financial year ended 30 June 2025.

Committee's Responsibility for the Financial Report

The committee of Lillian Howell Project Incorporated, are responsible for the preparation of the financial report and have determined that the basis of preparation described in Note 1, is appropriate to meet the requirements of the Associations Incorporation Act of New South Wales 2009 and is appropriate to meet the needs of the members. The committee's responsibilities also include such internal control as the committee determine is necessary to enable the preparation of a financial report that is free from material misstatement, whether due to fraud or error.

Auditor's Responsibility

My responsibility is to express an opinion on the financial report based on my audit. I have conducted my audit in accordance with Australian Auditing Standards. Those Standards require that we comply with relevant ethical requirements relating to audit engagements and plan and perform the audit to obtain reasonable assurance whether the financial report is free from material misstatement.

An audit involves performing procedures to obtain audit evidence about the amounts and disclosures in the financial report. The procedures selected depend on the auditor's judgement, including the assessment of the risks of material misstatement of the financial report, whether due to fraud or error. In making those risk assessments, the auditor considers internal control relevant to the association's preparation of the financial report that gives a true and fair view, in order to design audit procedures that are appropriate in the circumstances, but not for the purpose of expressing an opinion on the effectiveness of the association's internal control. An audit also includes evaluating the appropriateness of accounting policies used and the reasonableness of accounting estimates made by the committee, as well as evaluating the overall presentation of the financial report.

I believe that the audit evidence I have obtained is sufficient and appropriate to provide a basis for my audit opinion.

Additional scope pursuant to the Charitable Fundraising Act 1991

In addition, my audit report has also been prepared for the Association in accordance with Section 24(2) of the Charitable Fundraising Act 1991. Accordingly, I have performed additional work beyond that which is performed in my capacity as auditor pursuant to the Association's constitution. These additional procedures included obtaining an understanding of the internal control structure for fundraising appeal activities and examination, on a test basis, of evidence supporting compliance with the accounting and associated record keeping requirements for fundraising appeal activities pursuant to the Charitable Fundraising Act 1991 and Regulations.

It should be noted that the accounting records and data relied upon for reporting in fundraising appeal activities are not continuously audited and do not necessarily reflect after the event accounting adjustments and the normal year-end financial adjustments necessary for year-end financial report preparation.

The performance of my audit included a review of internal controls for the purpose of determining the appropriate audit procedures to enable an opinion to be expressed on the accounts. This review is not a comprehensive review of all those systems or of the system taken as a whole and is not designed to uncover all weaknesses in those systems.

My audit opinion pursuant to the Charitable Fundraising Act 1991 has been formed on the above basis.

Independent auditor's report cont.

Oehlers & Company

Chartered Accountant

ABN 23 165 393 137



CHARTERED ACCOUNTANTS
AUSTRALIA - NEW SOUTH WALES

INDEPENDENT AUDITOR'S REPORT TO THE MEMBERS OF LILLIAN HOWELL PROJECT INCORPORATED ABN 22 465 606 851

(Continued)

Audit Qualification

It is not always practicable for the Association to establish accounting control over all sources of fundraising appeal activities prior to receipt of these funds by members of the Association and accordingly it is not possible for my examination to include procedures which extend beyond the amounts of such income recorded in the accounting records of the Association

However, based on my review of the internal controls, nothing has come to my attention which would cause me to believe that the internal controls over revenue from fundraising activities by the Association are not appropriate.

Qualified Audit Opinion pursuant to the Charitable Fundraising Act 1991

In my opinion, except for the above qualifications:

- (a) the accounts give a true and fair view of the financial result of fundraising appeal activities for the financial year ended 30 June 2025;
- (b) the accounts have been properly drawn up, and the associated records have been properly kept for the period from 1 July 2024 to 30 June 2025, in accordance with the Charitable Fundraising Act 1991 and Regulations;
- (c) money received as a result of fundraising appeal activities conducted during the period 1 July 2024 to 30 June 2025 has been properly accounted for and applied in accordance with the Charitable Fundraising Act 1991 and Regulations; and
- (d) there are reasonable grounds to believe that Lillian Howell Project Incorporated will be able to pay its debts as and when they fall due.

Qualified Audit opinion on the financial accounts

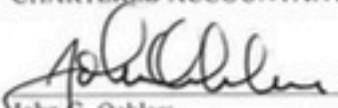
In my opinion, except for the potential effects on the financial accounts of the matters referred to in the qualification paragraph, the financial accounts of the Lillian Howell Project Incorporated are properly drawn up:

- (a) So as to give a true and fair view of:
 - (i) the state of affairs of the Association as at 30th June 2025 and,
 - (ii) the result of the Association's activities for the year ended on that date
- (b) in accordance with the provisions of the Associations Incorporation Act 2009.
- (c) in accordance with applicable Accounting Standards.

Basis of Accounting

Without modifying my opinion, I draw attention to Note 1 to the financial report, which describes the basis of accounting. The financial report has been prepared to assist Lillian Howell Project Incorporated to meet the requirements of the Associations Incorporation Act of New South Wales 2009. As a result, the financial report may not be suitable for another purpose.

JOHN G. OEHLERS
CHARTERED ACCOUNTANT


John G. Oehlers
Registered Company Auditor

Signed at Belrose.

Date: 15 October 2025

To the girls

SHE IS CLOTHED IN
strength
AND DIGNITY AND
she laughs
WITHOUT FEAR OF
the future

PROVERBS 31:25

Thank you for your continued support!

"The family we pick is stronger sometimes than the family we were born into."

Lillian  Howell
PROJECT INC

ABN: 22 465 606 851
www.lillians.org.au
lillians@lillians.org.au

